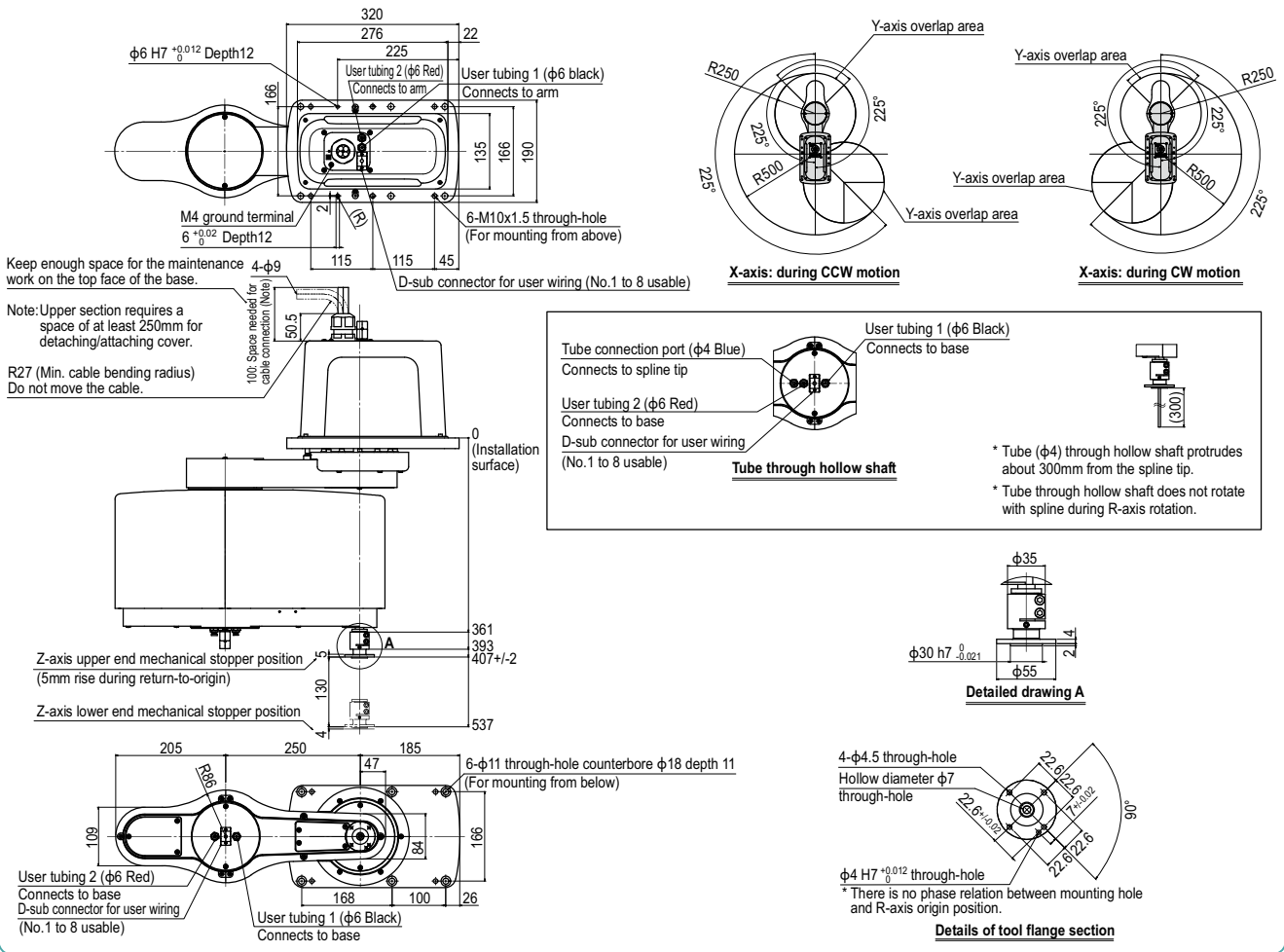


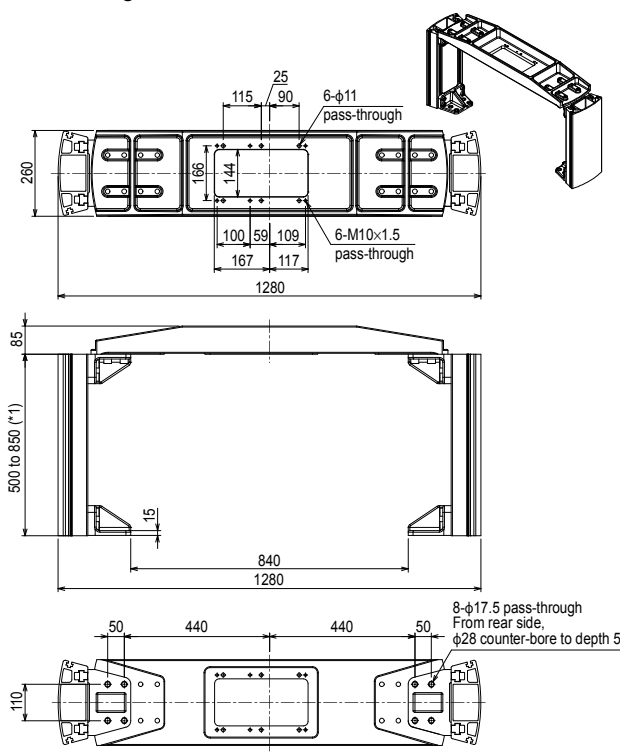
YK500TW Tool flange mount type



Dedicated mounting bracket for the YK-TW <BASE POST ASSY.>

The YK-TW can be easily installed on top of a customer-provided stand.

External diagram for the YK500TW



The mounting bracket is assembled by the customer. Refer to the included assembly diagram for assembly.

*1. Identical to the height of the robot mounting surface. The height of the stand can be selected at a 50 mm pitch.

Height (mm)	Model	Unit weight (kg)
500	KDU-M6100-P0	46
550	KDU-M6100-50	48
600	KDU-M6100-R0	50
650	KDU-M6100-60	51
700	KDU-M6100-S0	54
750	KDU-M6100-70	55
800	KDU-M6100-T0	57
850	KDU-M6100-80	59

* YK350TW and YK500TW are parts in common.
 * The top plate by itself weighs 19 kg.